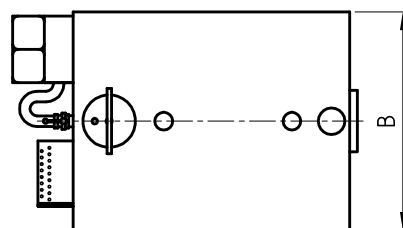
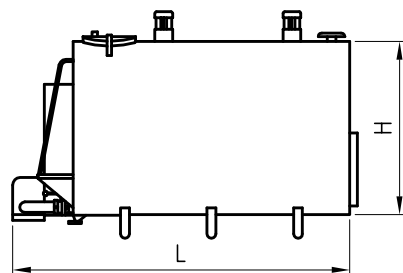
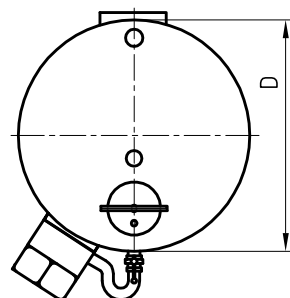
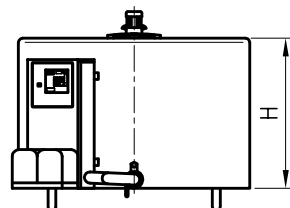


## KÜHLTANK MODELL KT/ RT

Modell Inhalt Liter	Länge L * cm.	Breite B/ Durchm. D cm.	Höhe H ** cm.	Rührer Anzahl St.	Wasser *** Liter
RT 700		116,5	100,0	1	7,0
RT 860		128,5	100,0	1	7,5
RT 1080		143,0	100,0	1	8,0
RT 1280		156,5	100,0	1	8,5
RT 1680		181,0	100,0	1	9,0
RT 2000		181,0	113,0	1	9,0
RT 2400		181,0	132,0	1	9,5
RT 2750		207,0	113,0	1	10,0
RT 3400		207,0	135,0	1	10,5
KT 1250	189,0	128,0	106,0	1	9,0
KT 1650	232,0	128,0	106,0	1	9,0
KT 2200	289,0	128,0	106,0	1	9,5
KT 2700	267,0	148,0	121,0	1	10,0
KT 3100	299,0	148,0	121,0	1	10,5
KT 3600	339,0	148,0	121,0	2	12,0
KT 4300	314,0	168,0	136,0	2	17,0
KT 5000	359,0	168,0	136,0	2	18,5
KT 5750	399,0	168,0	136,0	2	24,0
KT 6700	325,0	210,0	168,0	2	24,0
KT 7800	374,0	210,0	168,0	2	24,0
KT 9000	417,0	210,0	168,0	2	25,0
KT 9600	444,0	210,0	168,0	2	27,0
KT 10800	362,0	250,0	199,0	2	29,0
KT 13000	422,0	250,0	199,0	2	30,0
KT 14000	444,0	250,0	199,0	2	31,0
KT 15000	494,0	250,0	199,0	2	31,5
KT 17500	556,0	250,0	199,0	3	32,0
KT 20000	626,0	250,0	199,0	3	33,0
KT 25000	774,0	250,0	199,0	4	33,0



- \* Maß für Tank mit Leiter und Reinigungsautomat
  - \*\* Maß für Tank ohne Füße und Rührersmotor
  - \*\*\* Näherungswert, pro Spülgang
- größere, kleinere Tanks auf Anfrage

Die Mindestbreite der Tür ergibt sich aus:  $H+40\text{mm}$